

ENGELBRECHT J & T

J & T Engelbrecht * heuwel@kingsley.co.za *
Tel: 0835458434 * Cell: * E-Mail: admint@welkruin.co.za

PEDIGREE OF

0252 MASK 20

ENGELBRECHT

Colour: **BBAR** Sex: **Hen**

Hatched:

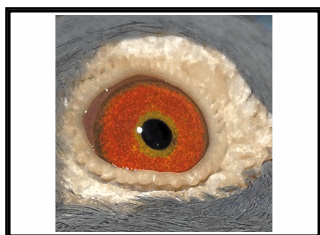
Winner of 15 th prize against 1205 pigeons
558 km race She completed the season
succesfully, as well as the extra added
Matjiesfontein endurance (only 9 months old).
Many good racers + stud forebears, Reliable
foor all speeds at different distances.

0252 MASK 20

SIRE

1415 MASK 20
A1-Special 15

BBAR
ENGELBRECHT



1415 IS ONE OF A KIND! HE IS A COMBINATION OF GENES THAT PROVED THEIR QUALITY MANY TIMES THROUGH BREEDING AND RACING. MY SPECIAL BEST FOR ALL RACES. FIRST YEAR IN STOCK, AND HE ALREADY PRODUCED

DAM

1742 ZA/SRF 16
#410, Never Say Die, Best Yb

BBAR
CLAUSING/Imbrecht (Bear)



Mother Maskam 1426/09 is half sister from father's + mother's side to top racers from club to internat level at SAMDPR. Father Clausing 176/09, is son of famous Clausing #410, when #410 was mated to his sister's child, "Never Say Die", winner of SAMDPR Final. This is super

2201 MASKAM 10
NR 1 STOCK COCK

BBAR
ENGELBRECHT-CLAUSING

FATHER TO MANY PRIZE WINNERS FINAL RACES, LI
"A1-SHORTCUT"=WINNER 623 km, 2+min AHEAD 1020 m/m MAIN RACE DINOKE=11 th ACE BIRD/HALF BROTHER 1st SA HOT SPOT ACE=46th @ 30+ COUNTRIES SCMDPR= MOTHER 75537=SUPER STUD HEN FROM WINNER 500 mile

0931 MASKAM 12
"A1-RUBY" Nr 1 Stud Hen

BBAR
ENGELBRECHT: Clausing/v Dyck/deBelsler

Top allround stud, +replace her mom as No 1 Stud She won 6 th Dinokeng 780 km. Children: A1 Daylight=5 th prize 4 th Car race+19 th= 3 rd car race, = 58 th Ace Car Races Samdpr. 2131=5 th Smithf, 5 th Bloemf, 8 th Winb. GrMom 2nd SA Ace =28 th Ace Samdpr+336/21=, 16 th 558 km 1544m/ 2331/22=10+25 HSpot

176 CLAUSING 09
#410 + Never Say Die

BBAR
CLAUSING

Son of: #410 + "Never Say Die"= famous winners prizes against many countries and in ZA.

1426 MASK 09
Line 100,300,400,500mil+Yb

RED
Engelbrecht:
Clausing/Imbrecht(Bear)316

HALF SISTER TO 55TH@3298 + TO 15TH BEST @3645 MDP SERIES. CLOSELY RELATE TO SCORERS FROM LOCAL TO INTERNATIONAL COMPETITIONS @THOUSANDS OF PIGEONS.

4087451 DV 07
GRANDSON KANNIBAAL

CHECK
DE BELSER-VAN DYCK
Super Stud, Nr 1 cross for our Clausings; father+gr.father to winners+performers, like win YB final;

75537 SA 03
DAUGHTER ZIKO JNR

BB WF
CLAUSING
EXCELLENT BREEDER OF WINNERS WHO EXCELL EVEN IN TOSES. HER CHILDREN IS

1430 MASK 09
"1430"

BBAR
ENGELBRECHT-CLAUSING
SUPER BREEDER: A1-RUBY 6 th 780 km; A1--MY BOY=87th FINAL MDP@30+countries =

2171 MASKAM 10
2171 Previous Nr 1 Breede

BBAR
ENGELBRECHT:
Clausing/vDyck/DeBelsler
Gr.Mom Ace P 5900 km+Ace Mid

410 CLAU 00
"410"

B/BAR
CLAUSING
FAMOUS TOP BREEDER OF WINNERS FROM CLUB LEVEL TO INTERNATIONAL LEVEL INCLUDING

300 CLAUSING 02
NEVER-SAY-DIE

CLAUSING
WINNER SUN CITY MDP@30+ COUNTRIES WINNER OF \$200000. HER MOTHER IS SISTER TO

316 CLAU 06
Line 100,300,400,500Miles

RED
CLAUSING/Imbrecht (Bear)
Half brother to winner 100 + 400 + 500 mile races on Father's side, and to 3 x 300 mile winner mom's side for Dave

155 CLAU 04
#410+Best YB

BBAR
CLAUSING+Imbrecht(Bear)
TOP BREEDER. MOTHER TO 55 th @ 3298 PIGEONS+15 th AVE @ 3645 IN SCMDPR TRAINING SERIES. DR

6472075 BELG 04

"LATE KANNIBAAL"

4087925 DV 04

TOCHTER "92 - 155"

261 CLAU 97

ZIKO JNR

710 CLAU 00

"DAUGHTER DAVID JNR"

13 CLAU 97

"SON ZIKO"

209 CLAU 05

"GR.MOMMY A1-RUBY"

2202 MASKAM 10

"GR.FATHER A1-RUBY"

2191 MASK 10

MOTHER A1-SHORTCUT

83 CLAU 96

DANA

38 CLAU 98

6143780 BELG 99

EVERT (SON RICO X FIARA)

248 CLAU 00

99 JAY 99

JAY

2370 FVC 96

410 CLAU 00

"410"

163 CLAU 02

For: ENGELBRECHT J & T