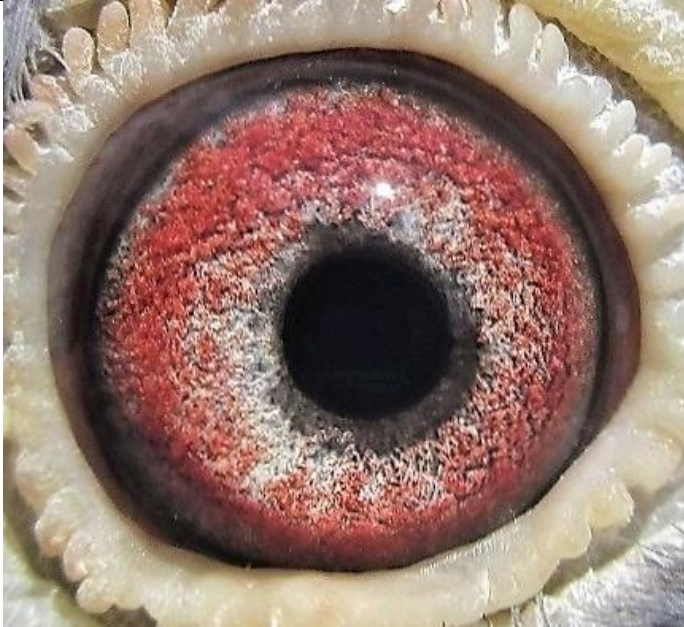


The Eyes in Focus – Matched Pair (i)

Soetdoring Lofts Finest for the Eye-Sign Enthusiasts

By Thomas Smit (SA Racing Pigeon Journalist)

Some Champion Fanciers credit their Success to the Study of the Eyes & other Champion Fanciers ignore the Eyes! However, it's an interesting Colourful World & our Loft Consultant takes a closer look!



ZA SLIM 2728-17 BC Cock Inbr. 'Boeing' Super Crack Crusson F457421-68 1e Intern. Narbonne, 3x 1e Nat Best Genes in disastrous Flights!



ZA TRPF 21924-17 BBP Hen Dght of 'Believe me Honey' B4347721-08 6e Carnival Only 12 Day Birds Marc de Cock Racing Pigeon Farm

The Winning Recipe of Soetdoring Lofts Finest begins with Super Health & a Winning Pedigree that contains the Genetics profile that prevails at the Top in International One Day Loft Competition! Proven Pedigree! Body Conformation/ Wing design/ Size / Balance / Bone & Muscle Structure: Selection of Mating's is decided on Complimentary differences. Only then are the make-up of the Eyes Considered!

Discussion: Starting with the pupil, the eye has 5 Circles, we would love them to stay intact! **The Pupil** of the Male in this Pair is darker & smaller than the Pupil of its Hen/ a Small pupil is desirable in Long Distance Birds/ **The Circle of Adaptation** borders the Pupil, its best seen with a Magnifier/ its broader & darker with this Male / **The Circle of Correlation** which is the 3rd Circle is a murky Grey in the Male & a blend of Old Gold, Green & Yellow with a Brown dilute between 03h00 – 07h00 in the Hen / **The Iris is the 4th Circle** – the Iris quality of this pair demonstrate refined to stronger portions of granulation rich in design and texture/ The background colours below the surface of the Iris is seen as a metallic Blue in the Male & a blend of Old Gold, Green & Yellow in the Hen/ The inner edge of the iris (on the outside rim of the Circle of Correlation) is more defined & complete in the Hen whilst the circle 'crashes' between 06h00 – 09h00 in the Male showing less Pigmentation & a larger field of the metallic Blue background/ Except for a small area at 08h00 the outer Pigmentation of the Iris in the Male is more equally dispersed around the orbit of the eye compared to the Hen that demonstrates Strong Pigmentation between 02h00 – 06h00 & again between 10h00 – 11h00 with a loss of Pigmentation between 12h00 – 02h00 **The 5th Circle** is seen at the outer edge of the Iris in a Grey/Blue dilute in the Male evenly visible around 90% of its eye & seen as a Green/ Brown dilute in the Hen, but overtaken by the Iris between 02h00 – 09h00/ Expectantly this Eye match should restore balance in its young!